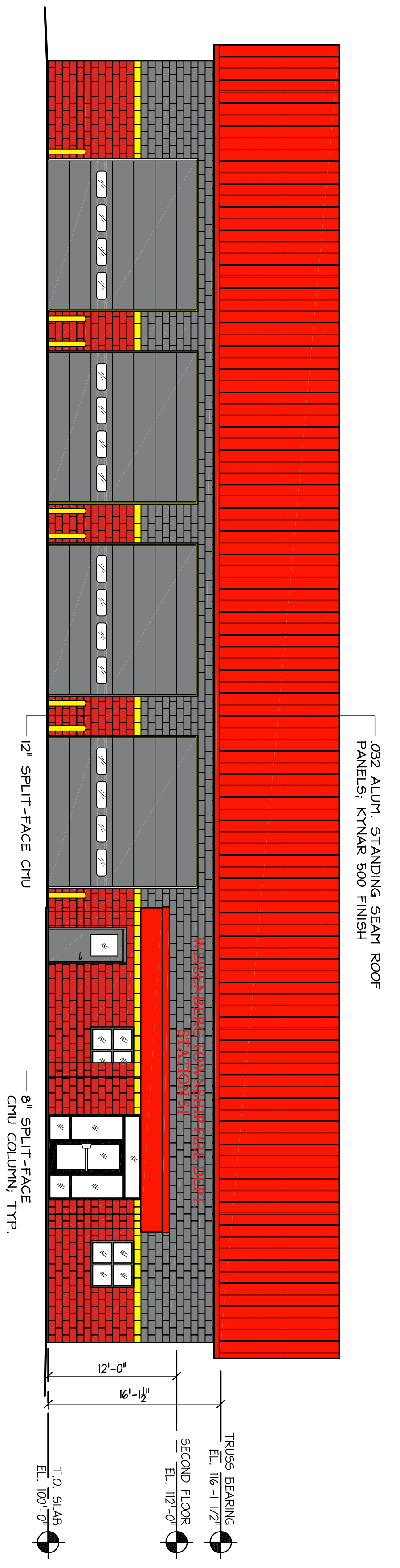
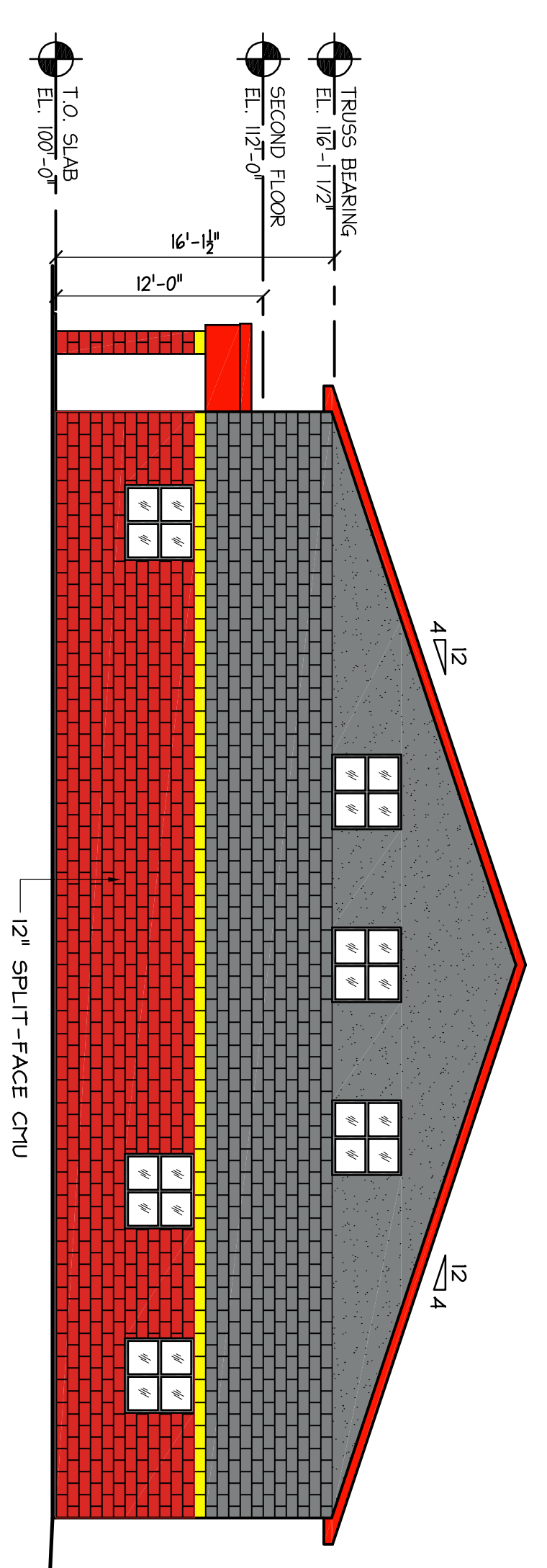


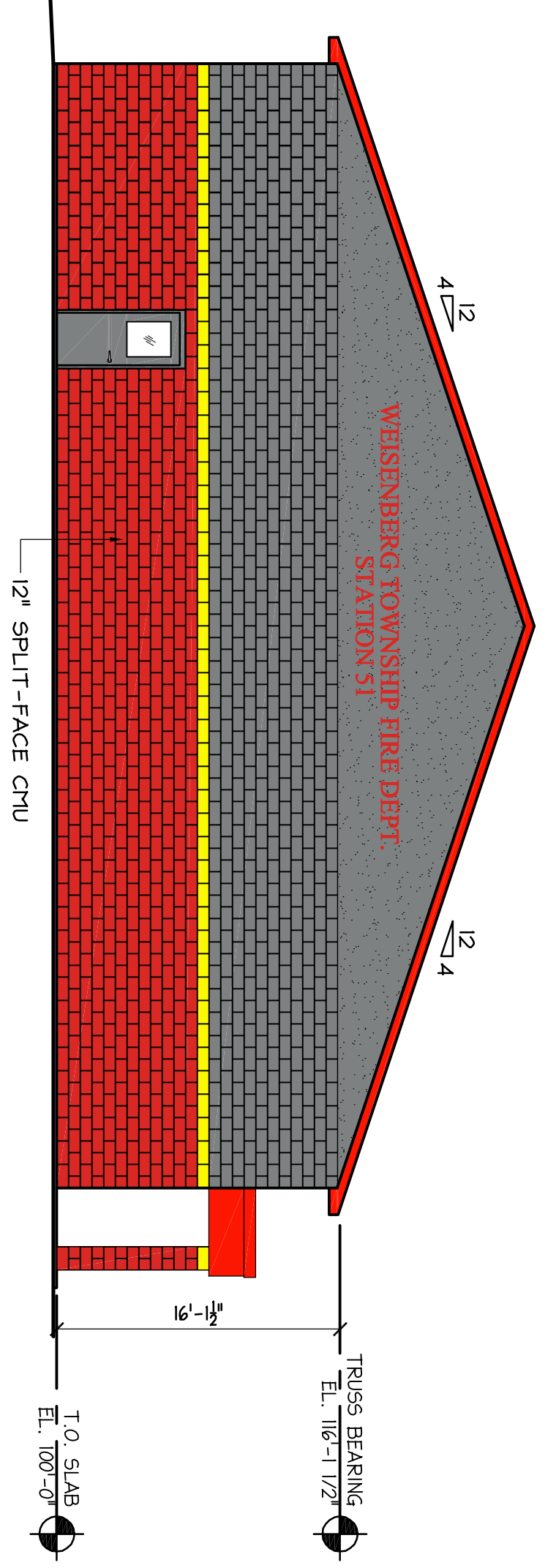
1 FRONT ELEVATION
1/8" = 1'-0"



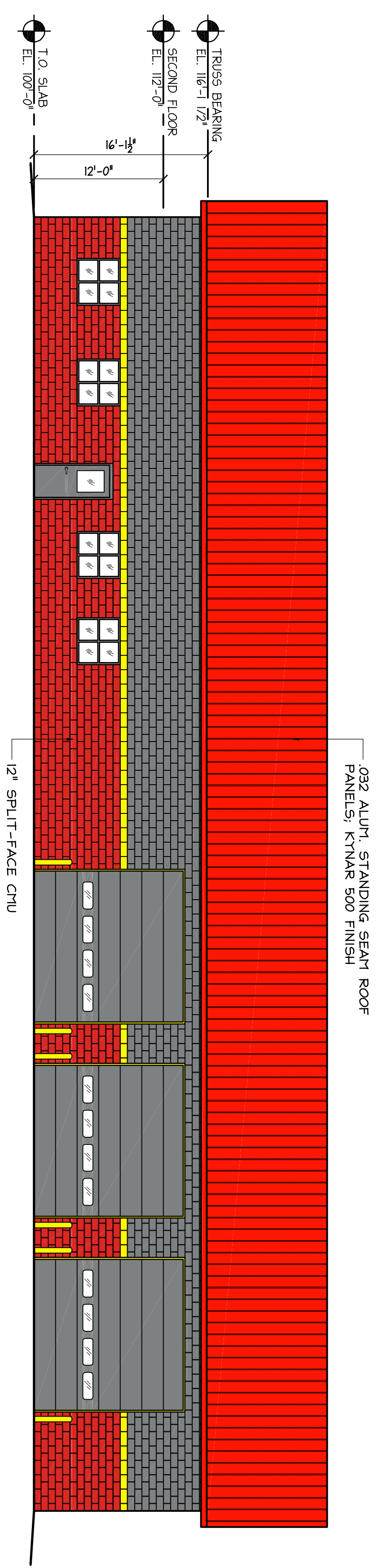
2 RIGHT SIDE ELEVATION
1/8" = 1'-0"



3 LEFT SIDE ELEVATION
1/8" = 1'-0"



4 REAR ELEVATION
1/8" = 1'-0"



ISSUED FOR REVIEW
12 / 5 / 08

PRELIMINARY NOT
FOR CONSTRUCTION

NO REVISIONS

DAVID M. KLECKNER
ARCHITECTS, P.C.
118 CATHERINE STREET
SPHILLINGTON, PA 19007
PH: 610-939-9600
FX: 610-939-0209
FOR VENDOR: DAVID M. KLECKNER
ALL RIGHTS RESERVED

ELEVATIONS
This is a copy and not the original drawing. The original drawing is on file in the offices of David M. Kleckner Architect. Any liability whatsoever is limited to the original drawing or last revision to the original drawing

PROPOSED EMERGENCY SERVICES STATION
WEISENBERG FIRE DEPARTMENT
GOLDEN KEY ROAD & SEIPSTOWN ROAD
PA
WEISENBERG TOWNSHIP, LEHIGH COUNTY

DATE: 11/14/08
DRAWN: CJD
CHECKED: P.J.L.
PROJECT NO.: 08-95
SHEET: A-4